

A **TATA** Product

VOLTAS



Also available

Microprocessor-controlled Packaged & Ductable Split Units



THE VOLTAS INTELLISYS RANGE

The Voltas **INTELLISYS** range of Packaged and Ductable Split Units are designed to be the most **INTELLIGENT** and **COMPACT** systems, to cater to your total cooling requirements. Applications include offices, banks, departmental stores, entertainment centers, multiplexes, restaurants, fast food centers, residences, computer rooms, telephone exchanges, hospitals, auditoriums, conference halls, theatres, factories, control rooms, etc. Packaged & Ductable Split Units are available in both **Air-cooled** and **Water-cooled** options.

POWERFUL FEATURES



Energy Efficiency

A range of sophisticated components such as a highly energy efficient compressor, internally grooved crosshatched copper tube coil with matched circuitry, and a microprocessor controller, result in a low power consumption.



Low Noise, Compact Indoor & Outdoor Units

Superior engineering coupled with technologically advanced components; ensure low noise levels, indoors and outdoors. Our new design IDUs and ODUs are more compact, saving valuable space.



Higher False Ceiling Heights

Low height IDUs enable higher false ceiling heights, improving the aesthetics.



Equalization Of Compressor Runtime

The Microprocessor Controller ensures equal running of compressors in multiple compressor units. This ensures a longer life for compressors.



Space Saving

The outdoor condensing unit, in a ductable split unit, is a compact unit and can be placed on a ledge, terrace or a wall-mounted bracket. The indoor unit can be ceiling-suspended or loft-mounted, a unique advantage.



Indoor Air Quality

Special synthetic woven filters remove fine dust particles to give clean air at all times. The filters are easily removable and washable.



Humidity Control

A highly-efficient evaporator coil keeps the room humidity within the desired comfort range.



Reliability

Our manufacturing plants are equipped with the latest and sophisticated tooling and machinery, backed by a modern R&D facility. The products are best-in-class, designed especially for tropical conditions, with high levels of reliability.



Blue Fin treatment

Hydrophilic fins and inner-grooved copper pipes are standard feature which provides resistance to corrosion & optimizes heat exchange / efficiency.

MICROPROCESSOR-BASED LCD CONTROLLER FOR DUCTABLE UNITS

The microprocessor controller installed on all the units, offers you the following benefits:



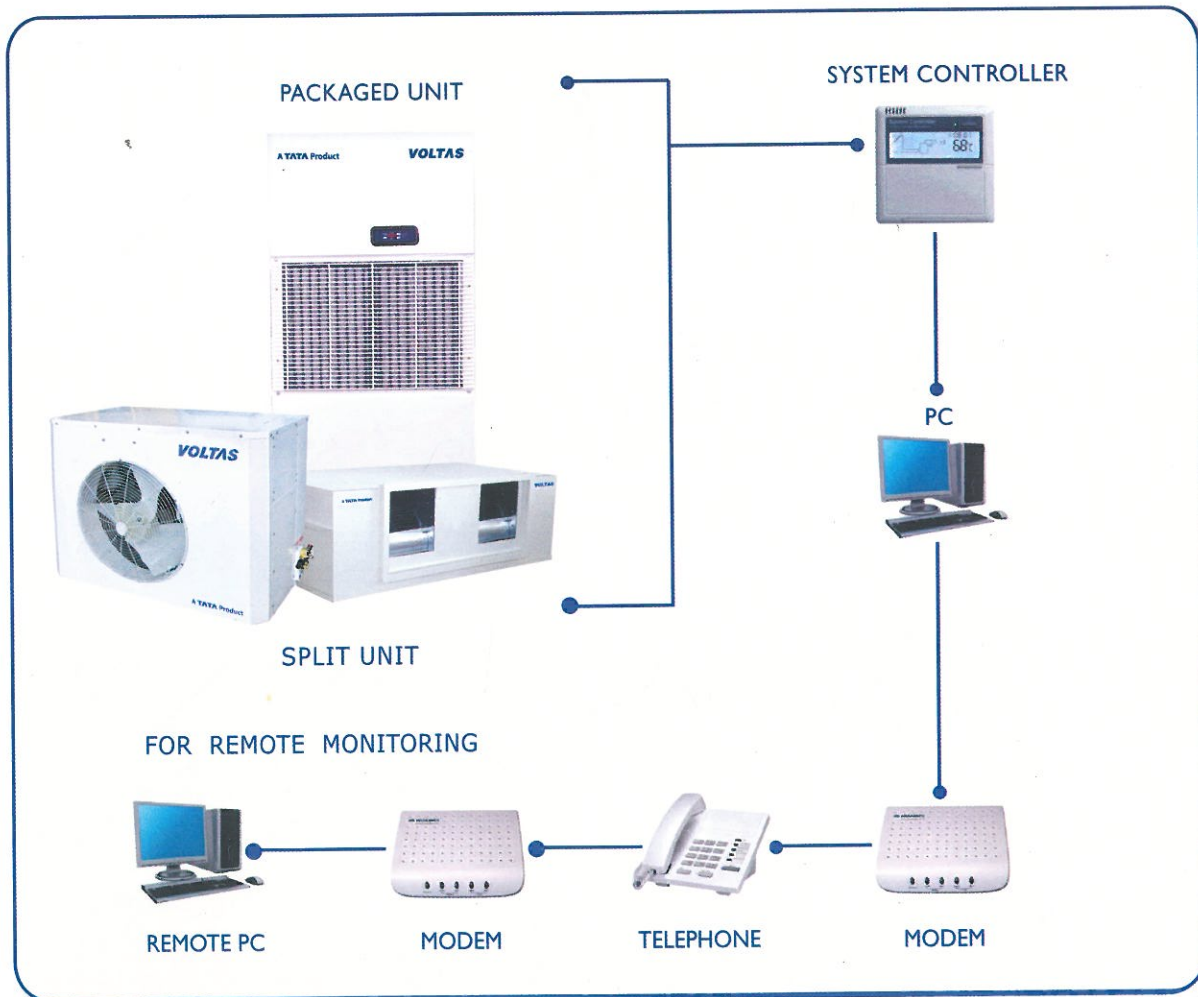
PACKAGED UNITS

Self-Diagnosis function, Auto-start mode, Energy saving, Motor protection device, Anti-recycle timer, Inbuilt temperature sensor and Programmable controller as mentioned above, but with LED display.

• MONITORING AT YOUR FINGER TIPS •

The VSCADA System (Optional)

- The Voltas Supervisory Control and Data Acquisition System (VSCADA) enables link-up of all the packaged and / or ductable split units in a building, to a Personal Computer.
- This enables Operation and Monitoring of each unit from the PC.
- Remote Monitoring from anywhere on the globe is also possible through a modem link-up.



TECHNICAL DATA - DUCTABLE SPLIT UNITS



SCROLL COMPRESSOR UNITS - R22 / R407C

Nominal TR	5.5 TR	8.5 TR	8.75 TR	11.0 TR	11.0 TR	16.5TR	17.0TR	22.0 TR
No. of Compressor	1	2	1	2	1	3	2	2

EVAPORATOR UNITS (INDOOR UNIT)

Model	ACDEU55CZGIM	ACDEU85C2ZG	ACDEU85CZGIM	ACDEU110CZGIM	ACDEU110C1ZGIM	ACDEU165CZGIM	ACDEU170CZGIM	ACDEU220CKGIM
Airflow (CMH)	3740	5780	5780	7480	7480	11560	11560	14960

Evaporator Fan Centrifugal Forward Curved Fan, Double Inlet Double Width

Power Supply 230 V-1 PH-50 Hz (2 Wire, AC Supply)

Length (mm)	1130	1508	1508	1820	1820	2020	2020	2100
Depth (mm)	750	795	795	780	780	750	750	1240
Height (mm)	475	404	404	475	475	575	575	640
Net weight (kg)	70	81	88	117	112	185	181	291

AIR-COOLED CONDENSING UNITS (OUTDOOR UNIT)

Model (R22)	ACDCUA05511D	-	ACDCUA08711D	ACDCUA05511D	ACDCUA11011D	ACDCUA05511D	ACDCUA08711D	ACDCUA11011D
Model (R22)	ACDCUA05511Y	ACDCUSC2875Y	-	ACDCUA05511Y	-	ACDCUA05511Y		
Model (R407c)	ACDCUA05512D	-	ACDCUA08712D	ACDCUA05512D	ACDCUA11012D	ACDCUA05512D	ACDCUA08712D	ACDCUA11012D

Power Supply 415 V - 3 PH - 50 Hz (4 Wire, AC Supply)

No. of Units	1	1	1	2	1	3	2	2
--------------	---	---	---	---	---	---	---	---

Condenser fan Axial

No. of Fans/CU	1	1	1	1	2	1	1	2
Length/CU (mm)	950	1320	1200	950	1550	950	1200	1550
Depth/CU (mm)	450	460	450	450	575	450	450	575
Height/CU (mm)	960	960	960	960	960	960	960	960
Net weight/CU (kg)	120	161	132	120	186	120	132	186

NOTES:

- 1) Product design and innovation are a continuous process in VOLTAS and hence the above specifications are subject to change without notice.
- 2) The nominal capacities mentioned are at the rating conditions of Indoor Temperature: 27 deg C DBT /19 deg C WBT, and Outdoor Temperature: 35 deg C DBT for Air-cooled condensers and condensing units.
- 3) Units are suitable to operate upto 48 deg C.
- 4) The Gas charging at Factory is as per standard connection distance between ODU & IDU. For extra lengths, Gas topping up at site is required.

TECHNICAL DATA - PACKAGED UNITS



SCROLL COMPRESSOR UNITS - R22 / R407C

Nominal TR	5.5 TR	8.5 TR	11.0 TR	16.5TR	17.0 TR	22.0 TR
WATER-COOLED UNIT						
Model (R22)	ACDPUWSC55	ACDPUWSC875D	ACDPUWSC110	-	ACDPUWSC170CD	ACDPUWSC220CD
Model (R407c)	ACDPUWSC55R407	ACDPUWSC875DR407	ACDPUWSC110R407	-	ACDPUWSC170CDR407	ACDPUWSC220CDR407
No of Compressors	1	1	2	-	2	2
Net weight (kg)	290	320	430	-	540	660
No. of Condenser	1	1	2	-	2	2
Condenser Water (In/Out)	1 -1/4" BSP	1 -1/4" BSP	1 -1/4" BSP x 2	-	1 -1/4" BSP x 2	1 -1/4" BSP x 2
Water Flow Rate/Cond. (LPM)	73	113	73	-	113	146

AIR-COOLED UNIT

Model (R22)	ACDPUASC55	ACDPUASC875D	ACDPUASC110	ACDPUASC165CD	ACDPUASC170CD	ACDPUASC220CD
Model (R407C)	ACDPUASC55R407	ACDPUASC875DR407	ACDPUASC110R407	ACDPUASC165CDR407	ACDPUASC170CDR407	ACDPUASC220CDR407
No of Compressors	1	1	2	3	2	2
Net weight (kg)	180	194	267	341	320	449
Airflow (CMH)	3740	5780	7480	11220	11560	14960
Evaporator fan	— Centrifugal Forward Curved, Double Inlet Double Width —					
Power Supply	415V • 3PH • 50Hz (4 Wire, AC Supply)					
Length (mm)	900	900	1220	1490	1490	2040
Depth (mm)	660	660	740	745	745	745
Height (mm)	1850	1850	1750	1790	1790	1790

AIR-COOLED CONDENSER

Model	ACDC60	ACDC90	ACDC60	ACDC60	ACDC90	ACDC120
Power Supply	230V -1PH - 50Hz (2 Wire, AC Supply)					
No. of Condenser	1	1	2	3	2	2
Condenser fan	Axial					
No. of Fan/Condenser	1	1	1	1	1	2
Length/Condenser (mm)	950	1200	950	950	1200	1550
Depth/Condenser (mm)	450	450	450	450	450	575
Height/Condenser (mm)	960	960	960	960	960	960
Net weight/Condenser (kg)	80	87	80	80	87	111

- NOTES:
- 1) Product design and innovation are a continuous process in VOLTAS and hence the above specifications are subject to change without notice.
 - 2) The nominal capacities mentioned are at the rating conditions of Indoor Temperature: 27 deg C DBT /19 deg C WBT, and Outdoor Temperature: 35 deg C DBT for Air-cooled units & cooling water inlet temperature of 32 deg C for Water-cooled units.
 - 3) Air-cooled Package units are suitable to operate upto 48 deg C.
 - 4) *Only Water-Cooled units are Factory Gas charged & Air-cooled units are to be charged at site.

• FEW OF OUR INSTALLATIONS •



NATIONAL LAW UNIVERSITY
AMPHITHEATRE



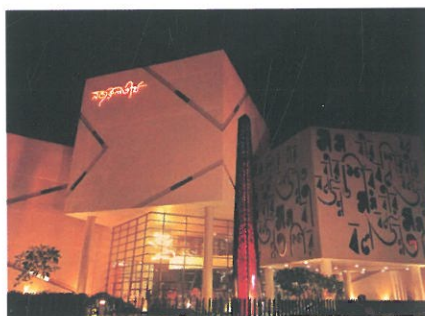
P&M MALL



VIT UNIVERSITY



BURGER KING



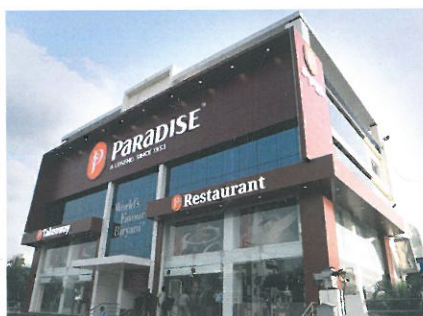
NAJRUL TIRTHA



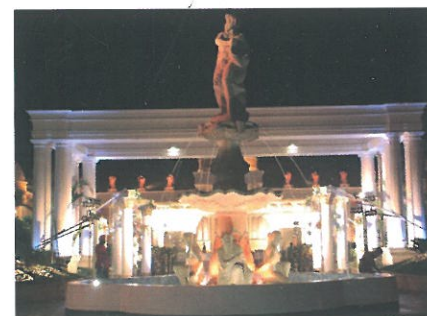
SHREE NARAYANA STUDIO



RAJMAHAL RESORTS



PARADISE RESTAURANT



SYDNEY HEIGHTS RESORTS

• PRODUCT RANGE •



VARIABLE REFRIGERANT FLOW SYSTEM (VRF)



WATER COOLED CENTRIFUGAL CHILLER



**ENERGY EFFICIENT
WATER COOLED SCREW CHILLER**



**ENERGY EFFICIENT
AIR COOLED SCREW CHILLER**



PACKAGED & DUCTABLE SPLIT UNIT



CO-GEN VAPOUR ABSORPTION MACHINE (VAM)



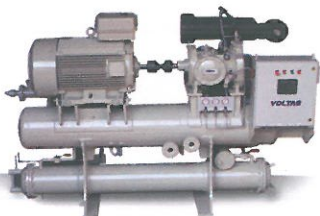
DOUBLE EFFECT VAM



AIR COOLED SCROLL CHILLER



WATER COOLED SCROLL CHILLER



PROCESS REFRIGERATION PACKAGE



IAQ & ENERGY REDUCTION SYSTEM



STP EA ODOUR / H₂S REMOVAL SYSTEM

VOLTAS

VOLTAS LIMITED

Domestic Projects Group, Voltas House 'B', 3rd floor, T. B. Kadam Marg, Chinchpokli, Mumbai-400 033, India

Tel: +91 22 6792 0307 / 6792 0263, Email: avinashsakhardande@voltas.com, rsaxena@voltas.com, bijogeorge@voltas.com

North: vikasjain@voltas.com, East: saptarshigupta@voltas.com, South: vssriram@voltas.com,

West: Mumbai : varunrao@voltas.com, Pune : sandeshthoraskar@voltas.com, Ahmedabad : devendrasharma@voltas.com

Website: www.voltas.com

NORTH ZONE: DELHI (011) 66505659/66505678/66505680/66505657 **CHANDIGARH** (0172) 6610124 **JAIPUR** (0141) 6541011 **LUCKNOW** 8588862618 **EAST ZONE:** KOLKATA (033) 66266268 / 662662283 / 66266262 **BHUBANESHWAR** (0674) 6574044 **PATNA** (0612) 2500786 **RAIPUR** (077) 14033886 **WEST ZONE:** MUMBAI (022) 66656754/ 66656756 / 66656757 / 66656759 / 66656760 **NAGPUR** (0712) 6456894 **AHMEDABAD** (079)